



Europäische Union. Europäischer  
Fonds für regionale Entwicklung.  
Evropská unie. Evropský fond pro  
regionální rozvoj.



Ahoj sousede. Hallo Nachbar.  
Interreg V A / 2014 – 2020

STAATSBETRIEB  
SACHSENFORST



Freistaat  
SACHSEN





Europäische Union. Europäischer  
Fonds für regionale Entwicklung.  
Evropská unie. Evropský fond pro  
regionální rozvoj.



Ahoj sousede. Hallo Nachbar.  
Interreg V A / 2014 – 2020

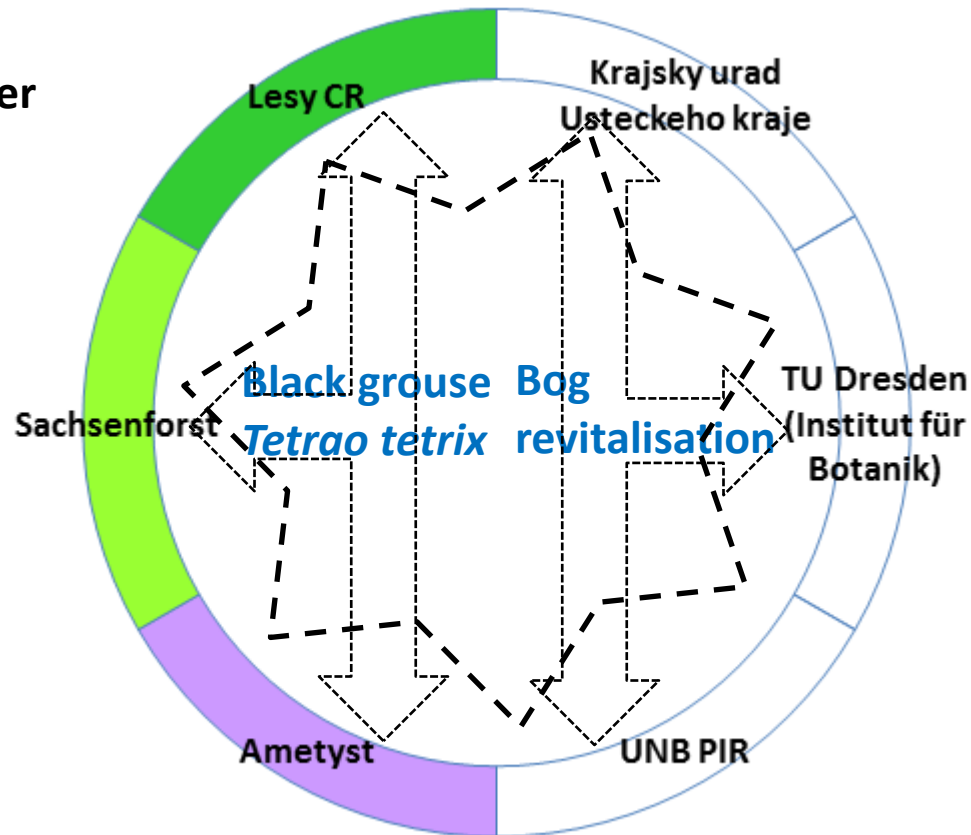
STAATSBETRIEB  
SACHSENFORST



Freistaat  
SACHSEN

# TetraoVit-project

partners  
working together





Europäische Union. Europäischer  
Fonds für regionale Entwicklung.  
Evropská unie. Evropský fond pro  
regionální rozvoj.



Ahoj sousede. Hallo Nachbar.  
Interreg V A / 2014 – 2020

STAATSBETRIEB  
SACHSENFORST



Freistaat  
SACHSEN

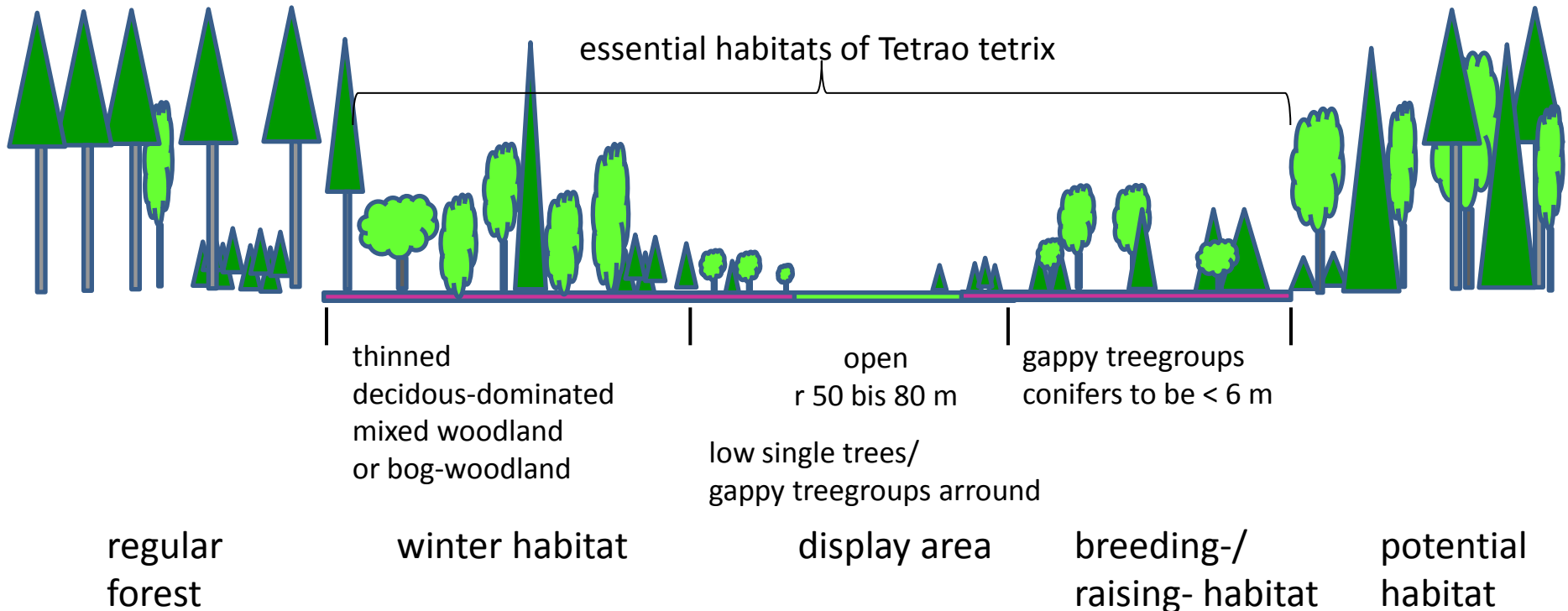
## milestones

### Sachsenforst:

1	Develop a habitat-key system	
2	Purchase of remote sensing data (whole project area)	
3	Develop a method for (semi-) automatic analysis and prognosis of Black grouse habitat structure by using remote sensing data	
4	Public relations (publication in a magazine)	



## milestone 1. develop a habitat-key system



important physical parameters: **1. tree-species, 2. tree-height, 3. tree coverage,**  
(habitat-key system) **4. ground-vegetation, 5. [topographical exponation]**



Europäische Union. Europäischer  
Fonds für regionale Entwicklung.  
Evropská unie. Evropský fond pro  
regionální rozvoj.



Ahoj sousede. Hallo Nachbar.  
Interreg V A / 2014 – 2020

STAATSBETRIEB  
SACHSENFORST



Freistaat  
SACHSEN

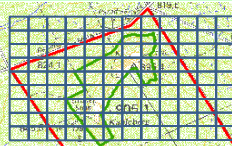
## milestone 2. purchase of remote sensing data

- Colour orthophotos 16 bit (8 bit) channels Red, Green, Blue, Infrared
- Airborne images 16 bit channels Red, Green, Blue, Infrared
- Digital Terrain Model
- Digital Surface Model
- Satellite data (for example: PlanetScope 3 m, Quick Bird 0.5 m)

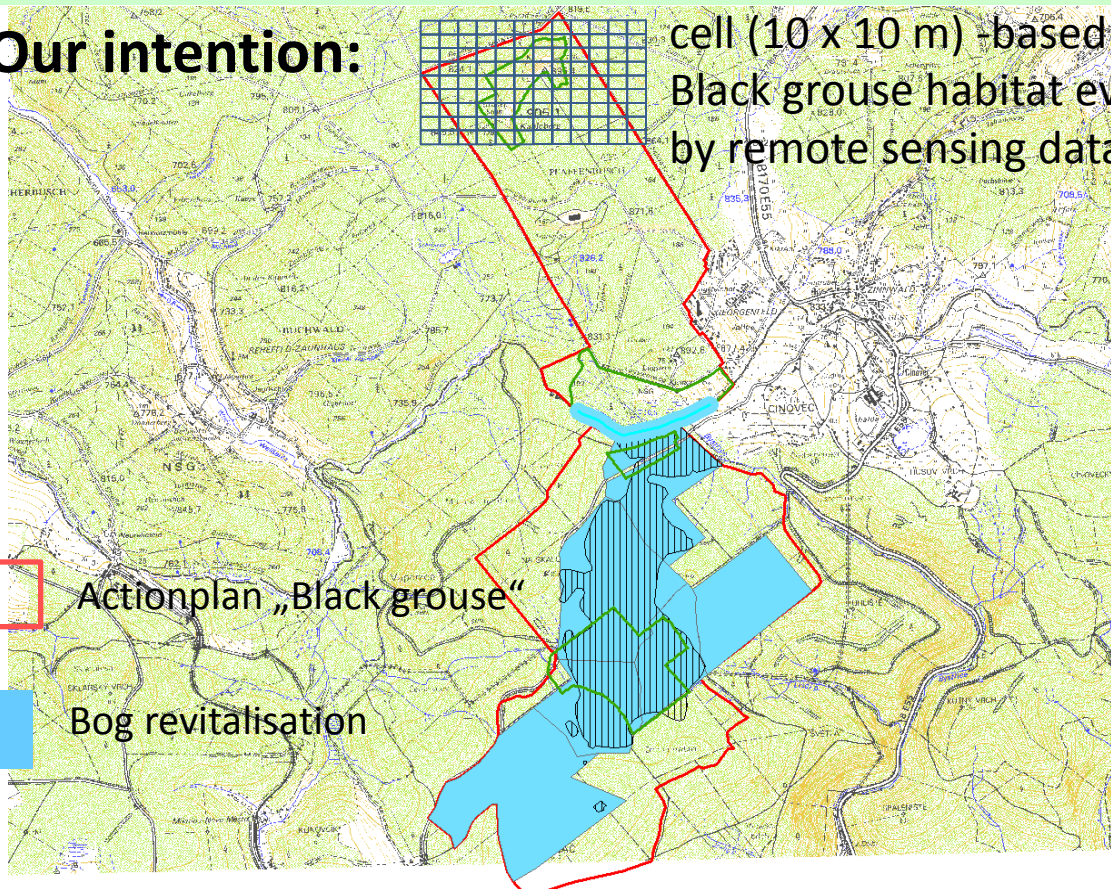


## milestone 3. method for (semi-) automatic analysis and prognosis of Black grouse habitat structure

**Our intention:**



cell (10 x 10 m) -based  
Black grouse habitat evaluation  
by remote sensing data



Actionplan „Black grouse“

Bog revitalisation



Europäische Union. Europäischer  
Fonds für regionale Entwicklung.  
Evropská unie. Evropský fond pro  
regionální rozvoj.



Ahoj sousede. Hallo Nachbar.  
Interreg V A / 2014 – 2020

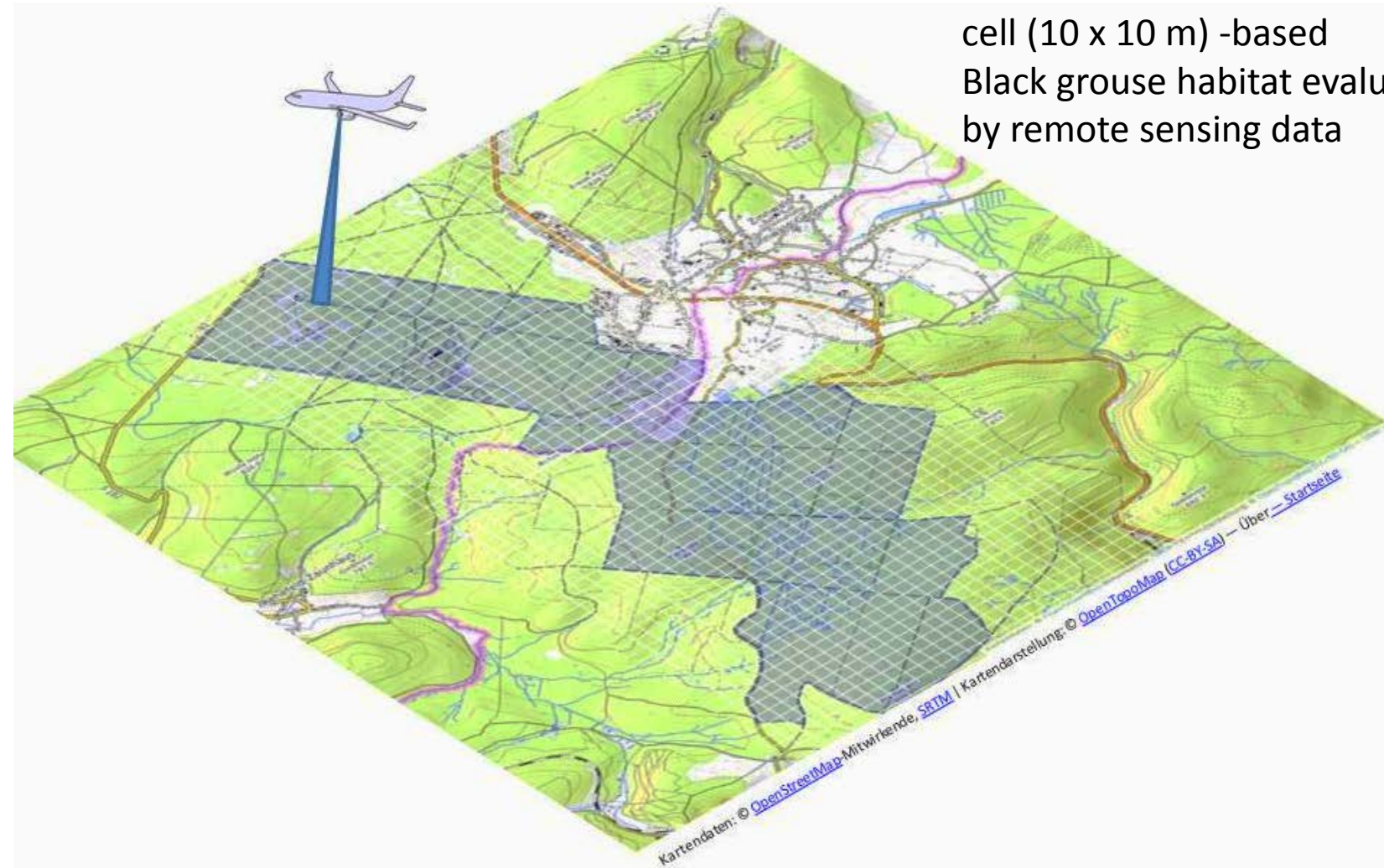
STAATSBETRIEB  
SACHSENFORST



Freistaat  
SACHSEN

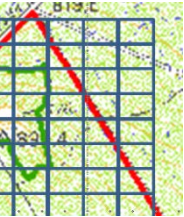
# TetraoVIT-project

cell (10 x 10 m) -based  
Black grouse habitat evaluation  
by remote sensing data





## step 3.1: providing 5 remote sensing parameters for each cell



Tree species (at least treegroups)

-> *Picea abies*, *Picea pungens*, *Pinus silvestris*, *Pinus mugo*,  
*Larix*, *Betula*, *Sorbus*, *Fagus*, other leave trees

Tree height

-> 1m classes possible?

Tree coverage

-> 5% steps?

Ground vegetation

-> mostly... pure soil, *Vaccinium/Calluna*, moss,  
high grass (*Calamagrostis*), low grass (*Carex*, *Deschampsia*)

topographical exponation ->

